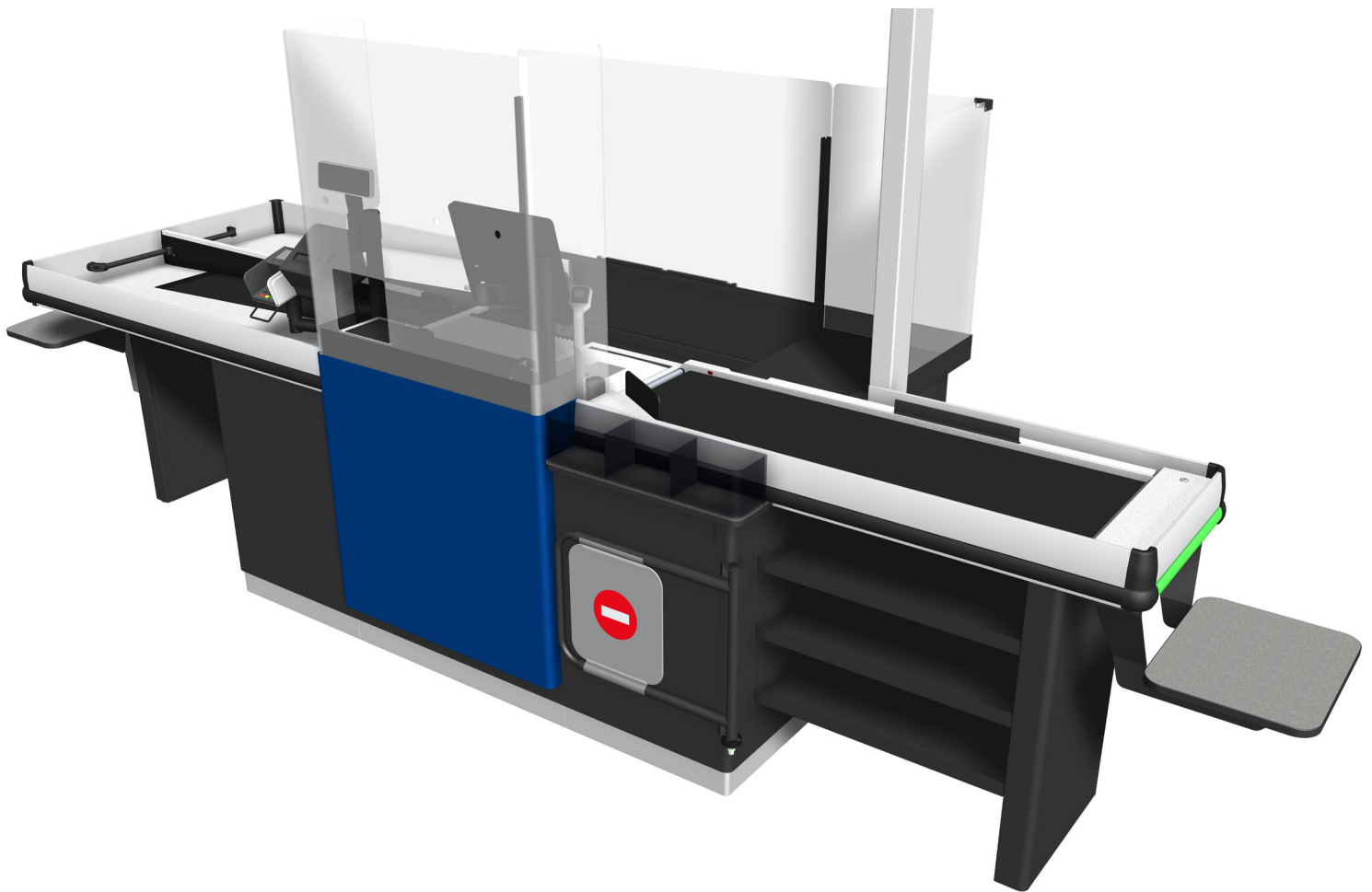


CCO Checkouts

Linear and hybrid models

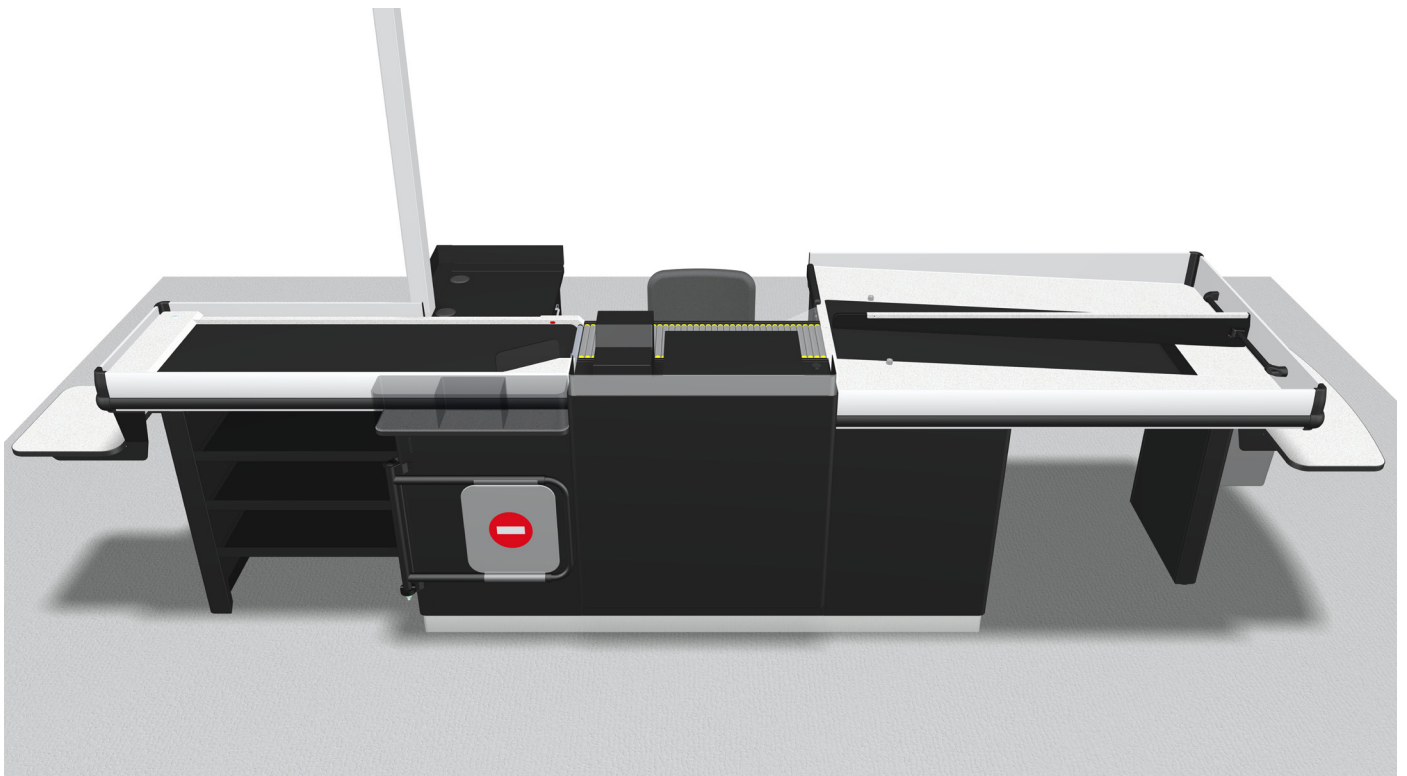


Catalogue 2026

Linear Checkouts

A smart, strong and adaptable checkout solution

Linear is a robust and versatile checkout counter designed for different types and sizes of stores. With a wide range of versions, length combinations, and accessories, it offers flexibility and efficiency for both store staff and customers.



► A smooth and pleasant checkout experience – for everyone involved

Who is it for?

► Target customers

Primarily designed for grocery stores, but also suitable for other indoor stores handling packaged goods up to 100 kg – such as DIY, wholesale, and branch stores.

► Retail environment

Ideal for indoor environment where speed, durability and ergonomic operations are important.

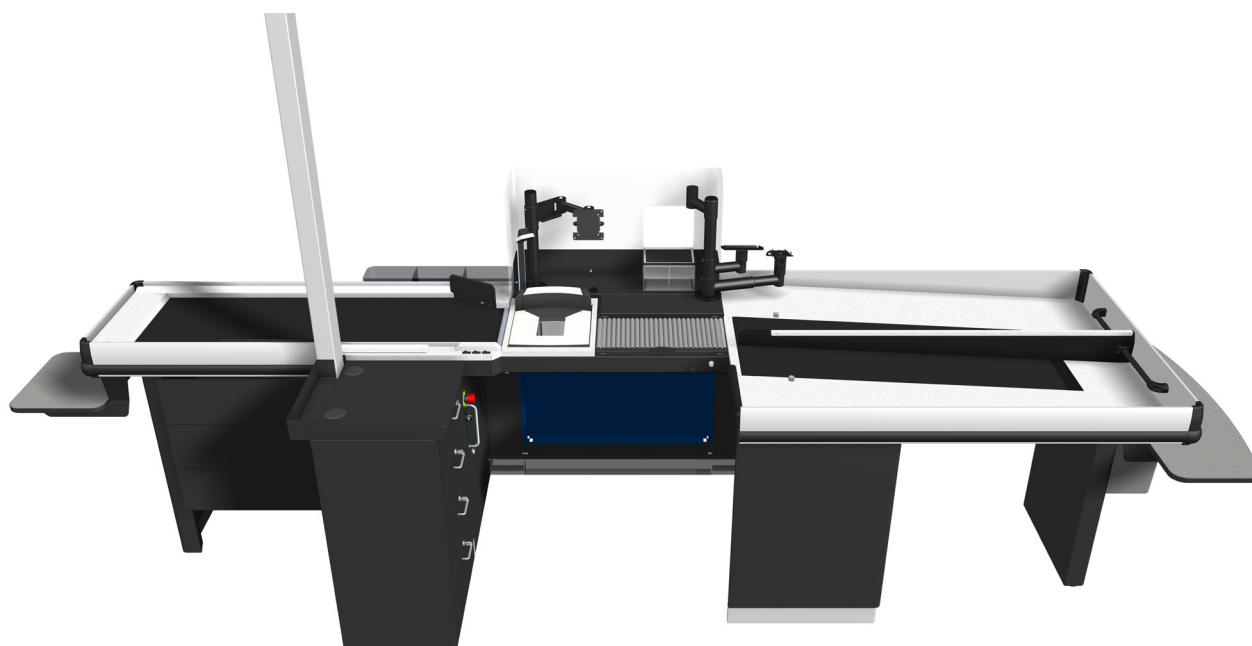
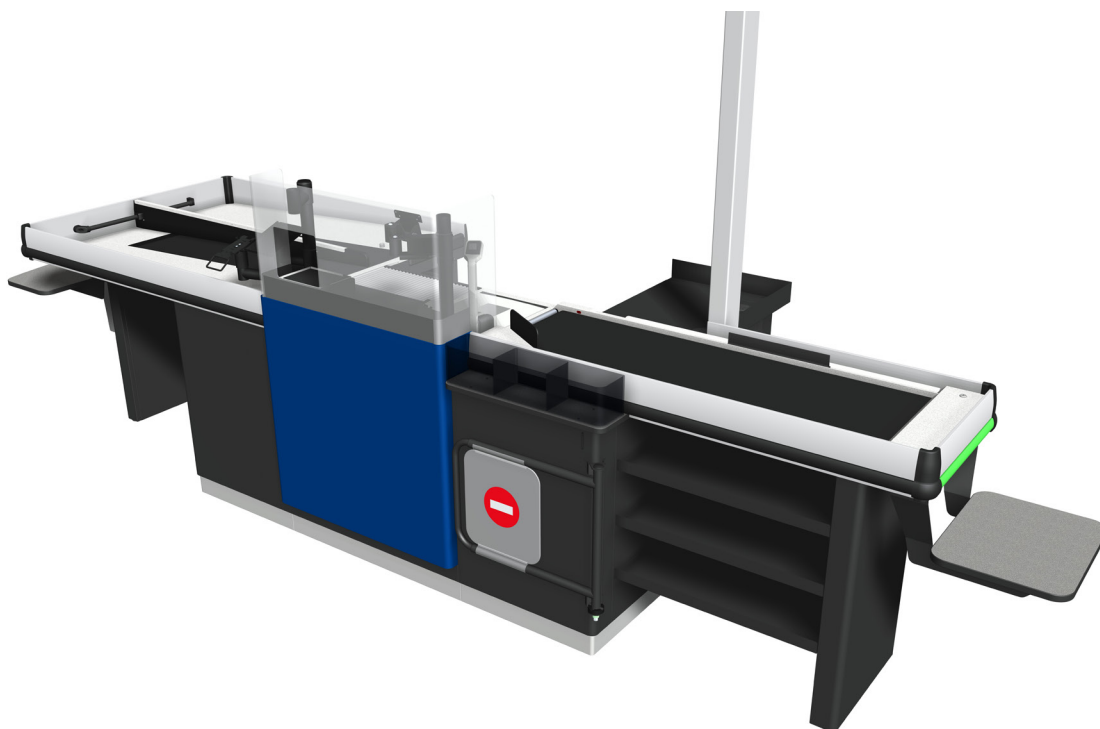
Key features and benefits

- Wide selection of models and configurations
- Compatible with various POS and cash management systems
- Ergonomic design based on Swedish recommendations (ADI566)
- Easy to use, clean and maintain
- High adjustable and plenty of options and accessories
- Optimized for fluent customer flow and fast installation

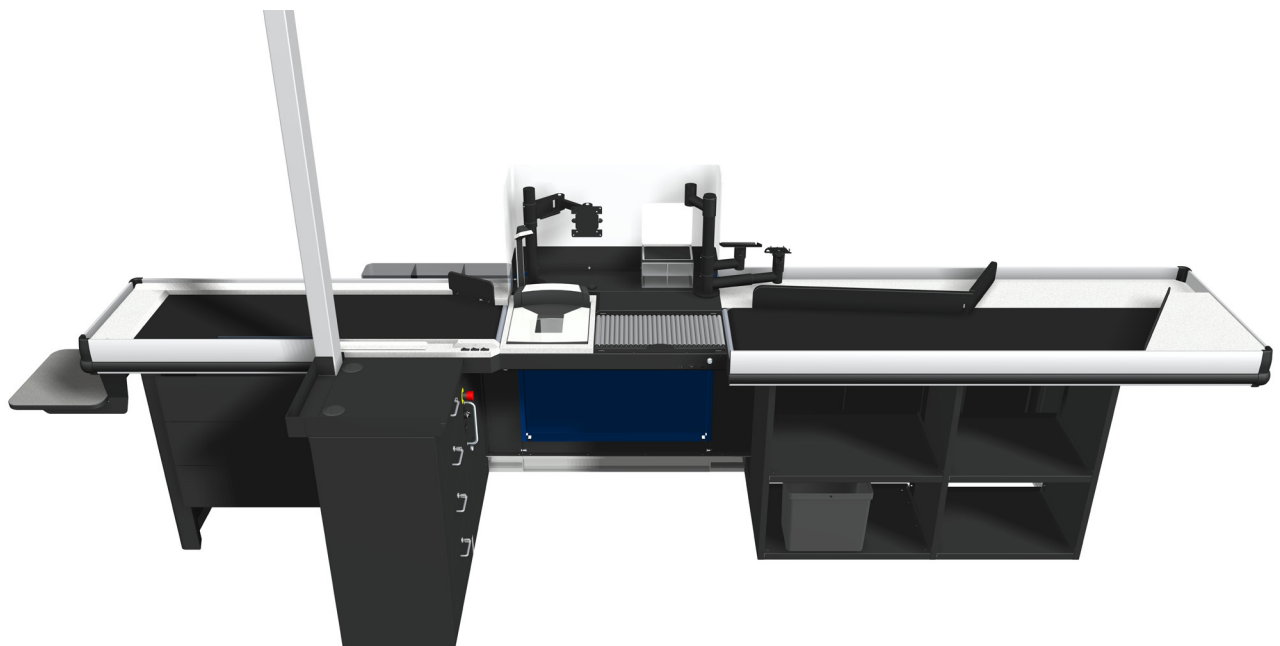
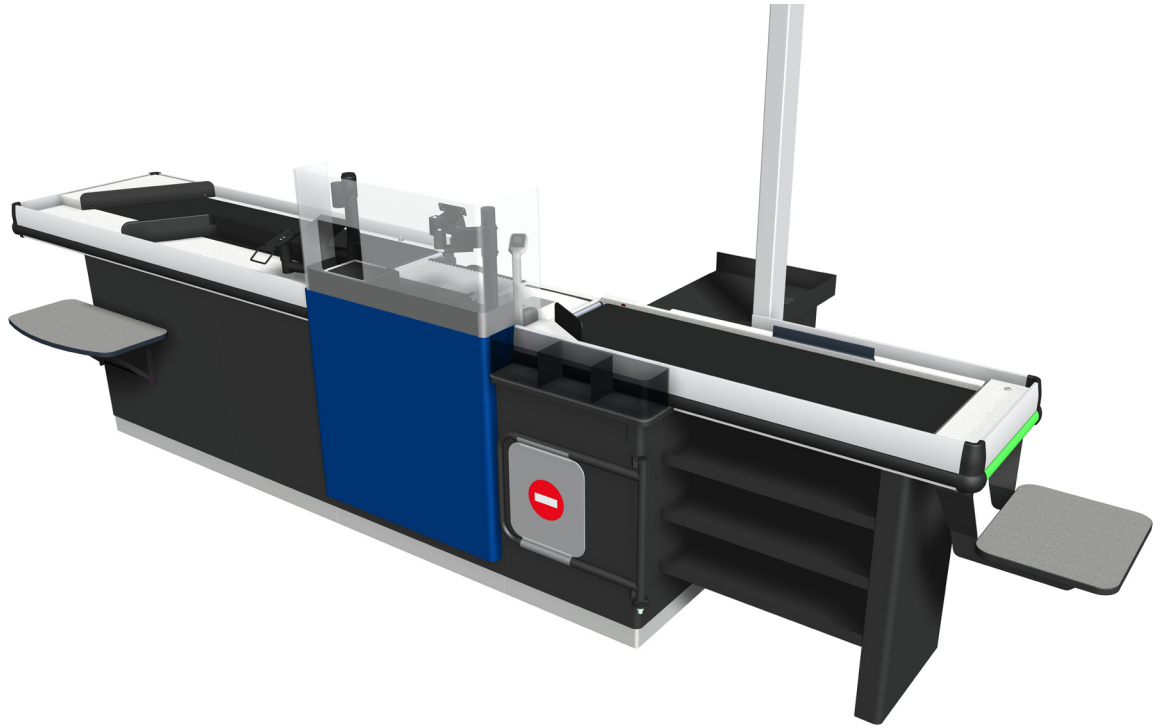
Technical specification

| | |
|---------------------------|---|
| Dimensions | Length: 2 550–5 950 (2 900–6 300) mm Width: 1 200 mm Height: 905 (870–1 100) mm |
| Packing area alternatives | Dual lane divider, Dual lane with 3rd customer functionality, Triple lane with additional divider |
| Weight | 180–350 kg |
| Certifications | FI |
| Voltage | ~230 VAC, 50–60 Hz |
| Operating conditions | Indoor, 5–35°C |
| Payment option | Cash and card payment, Prepared for Cash guard, Prepared for Safepay |
| Scale | Digi, Stathmos, Bizerba |
| Scanner | Dimensions prepared for Magellan 3200 V, 3450, 9300, 9800 |
| Standards | EN ISO 12100, EN 60204-1, EN 61000 |
| Options | Yes |

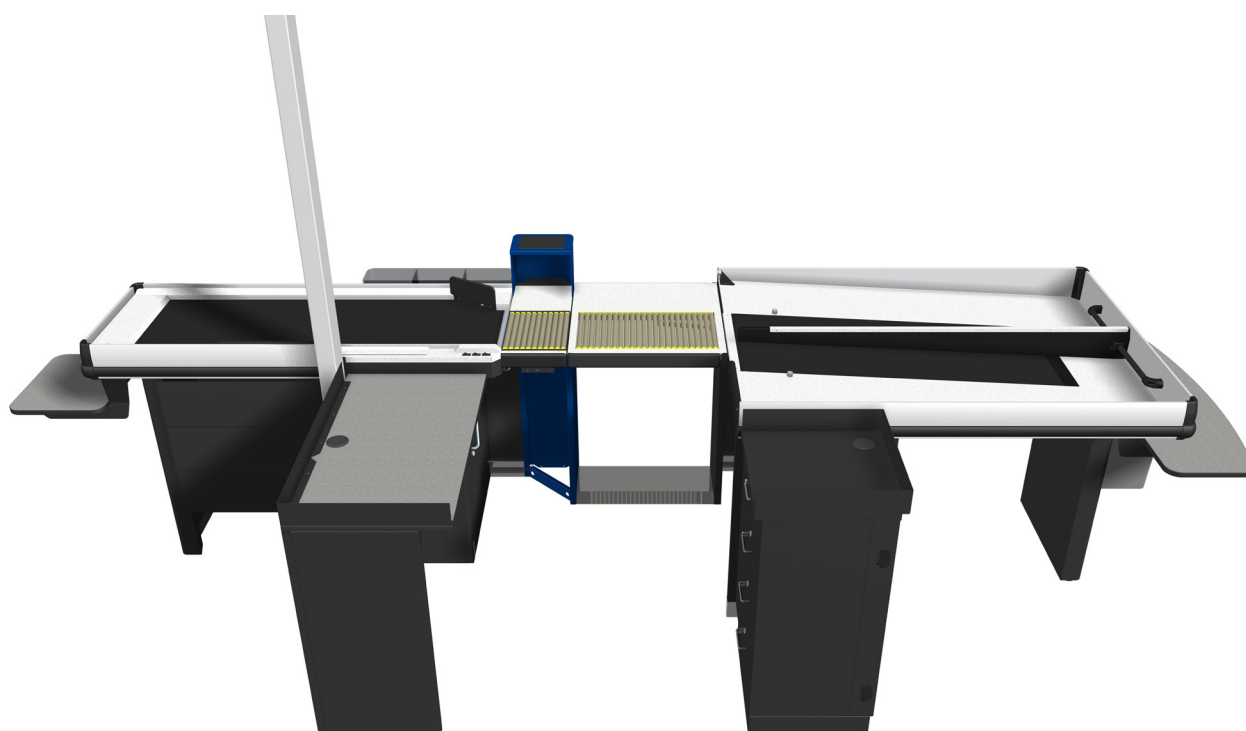
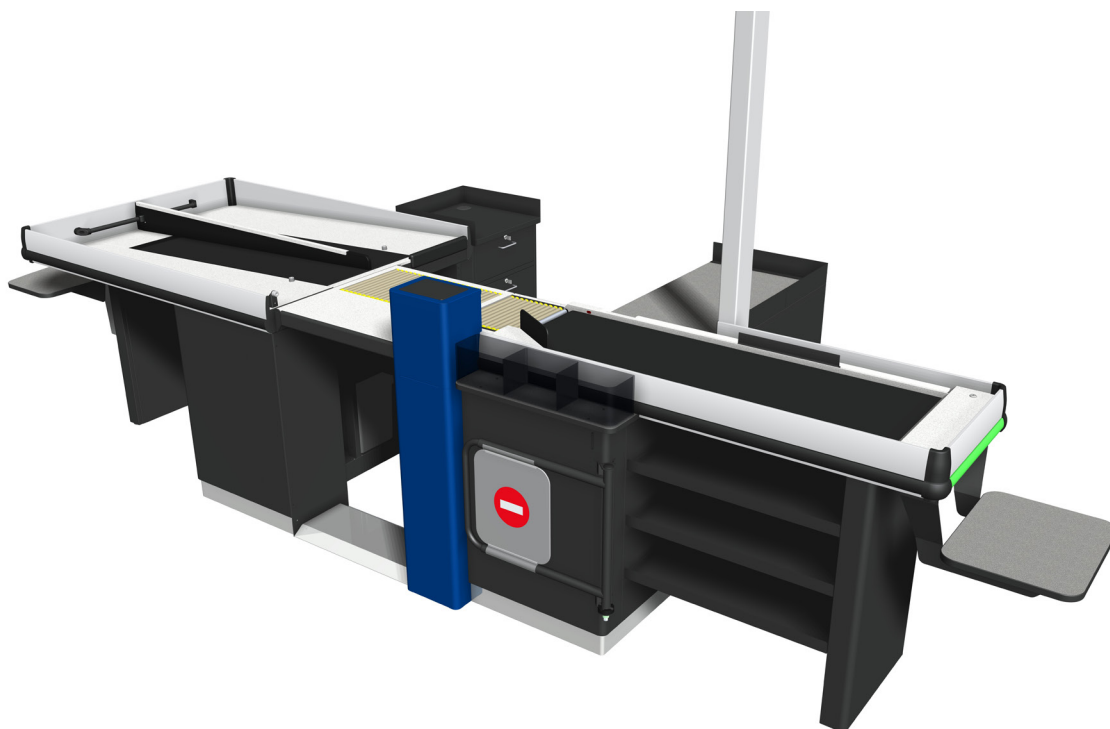
Linear Standard



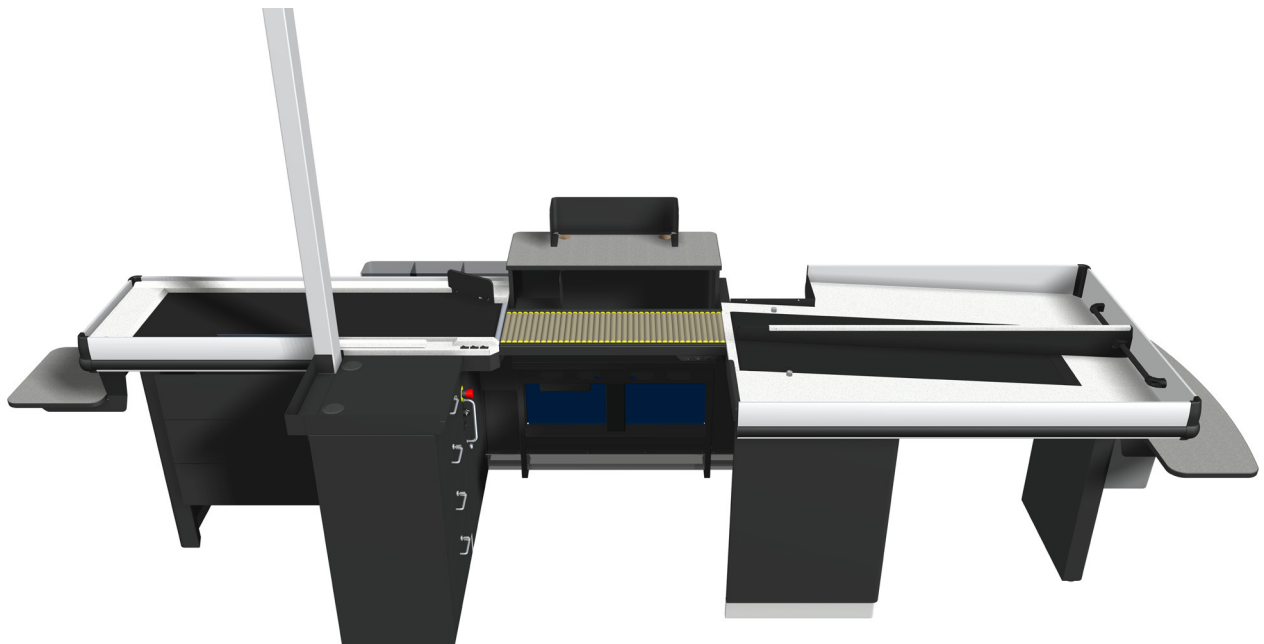
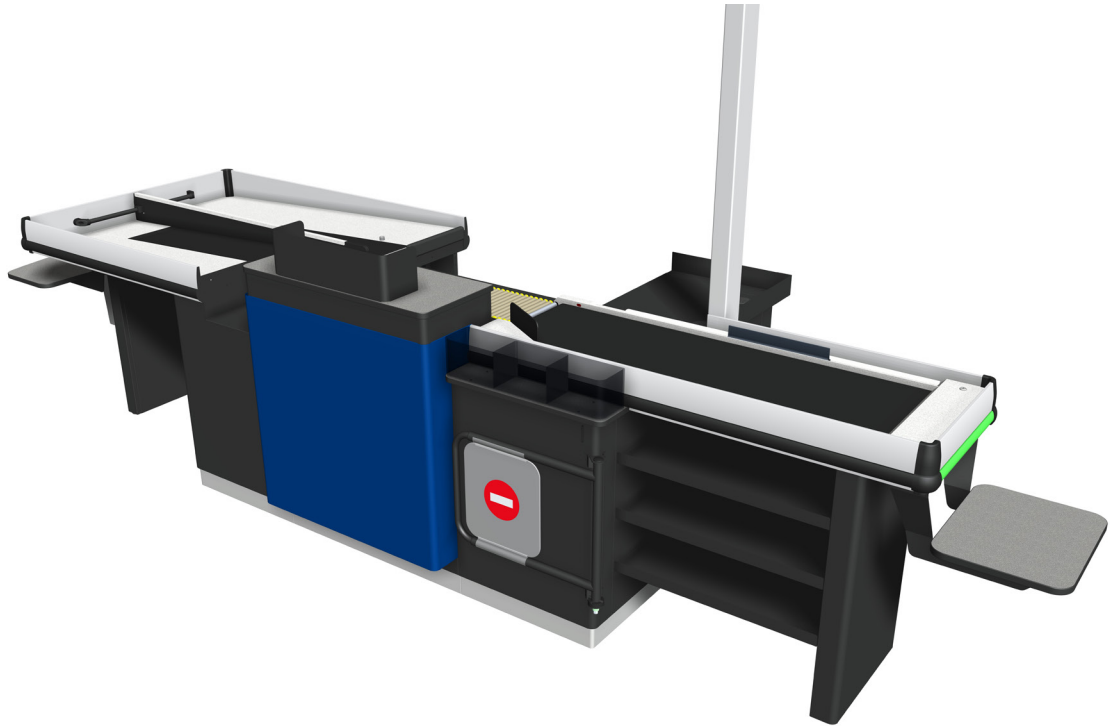
Linear Kiosk



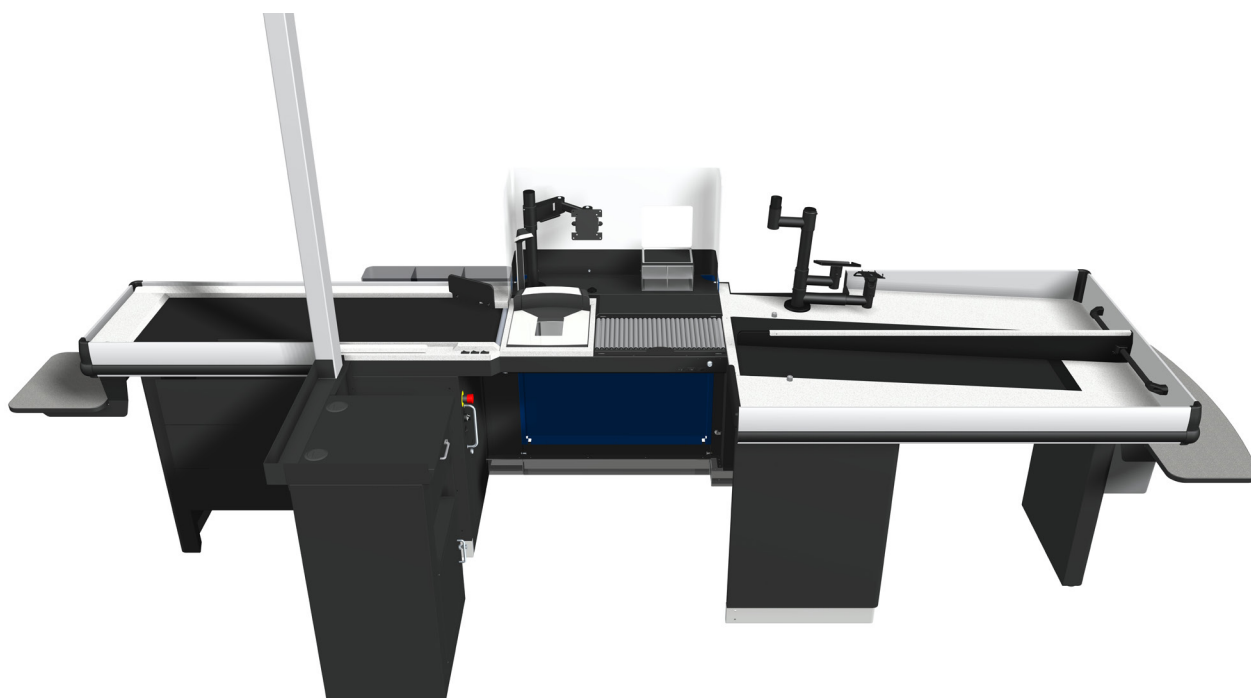
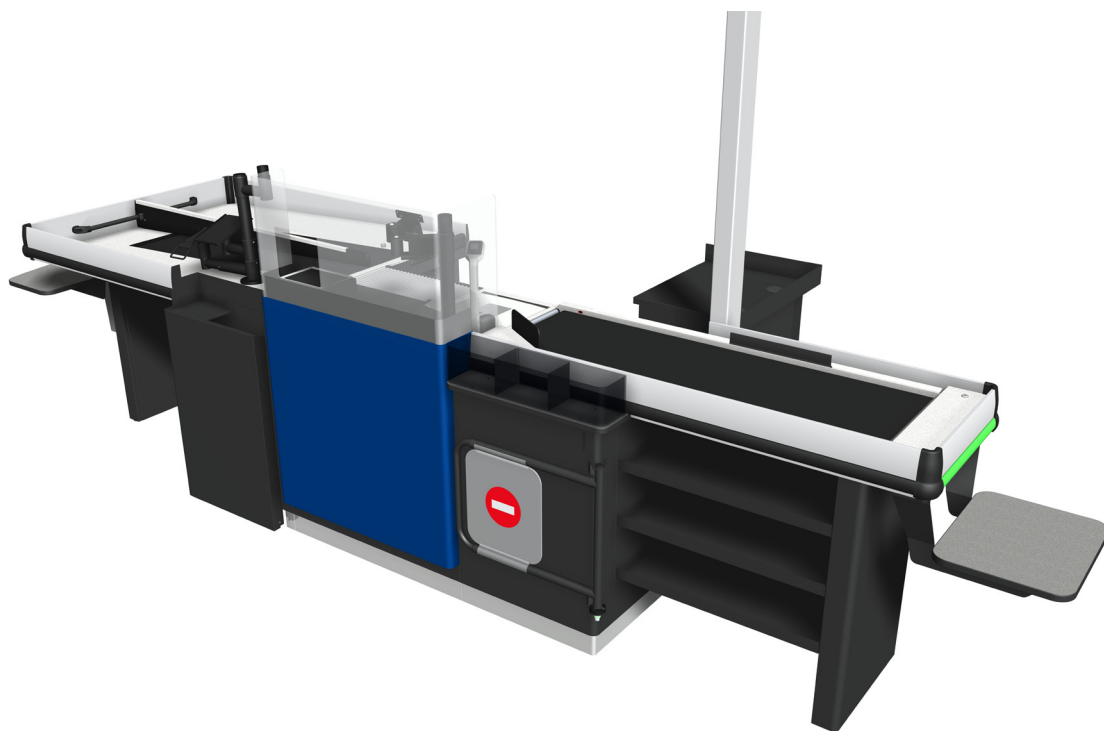
Linear T



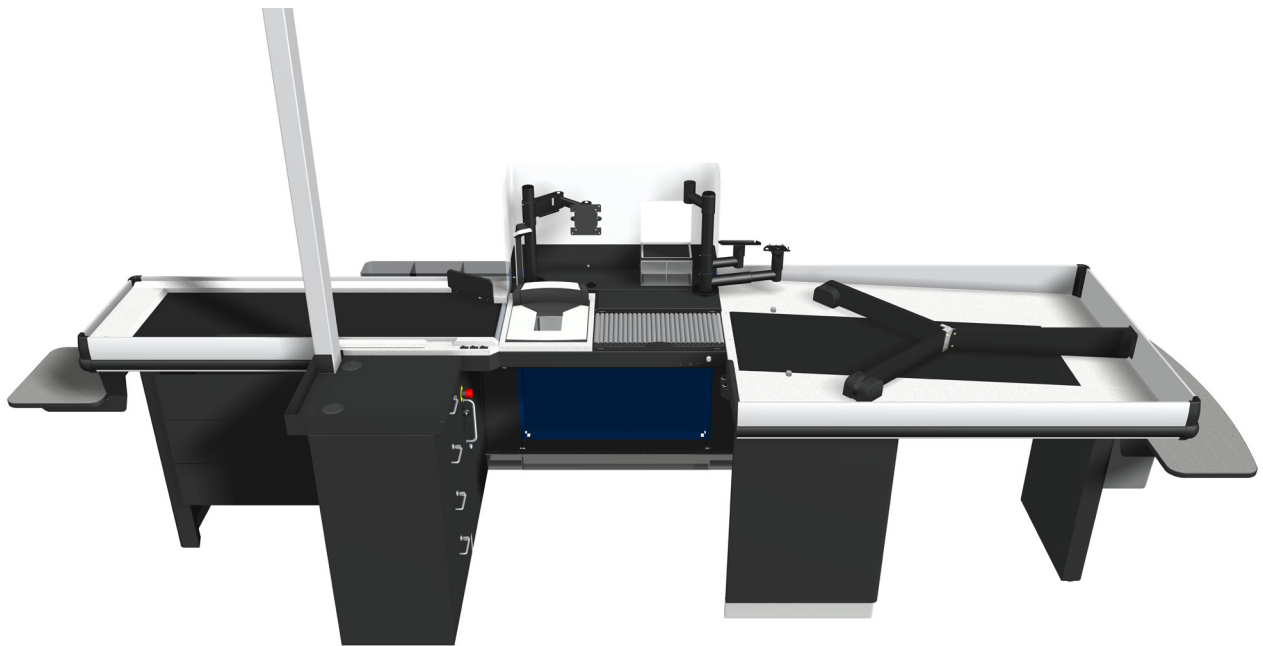
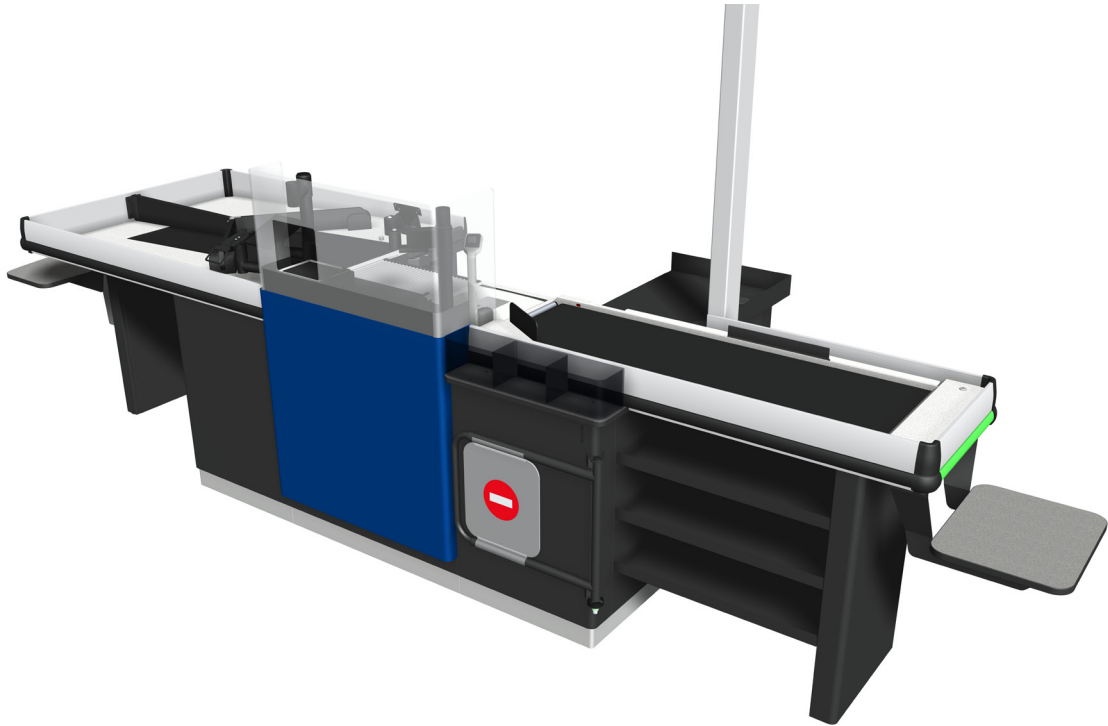
Linear with cash guard



Linear with safe pay



Linear with 3rd customer solution

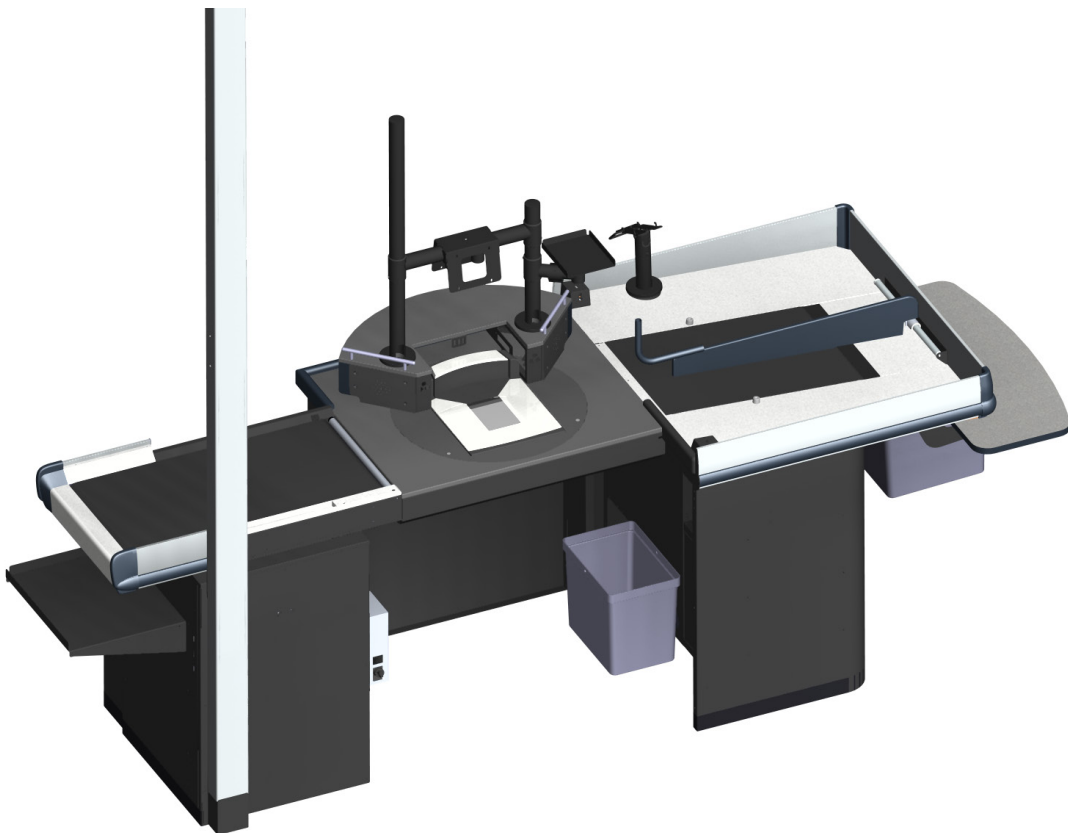




Hybrid Checkouts

One checkout
– two modes of operation

Hybrid is a compact checkout solution that seamlessly switches between staffed (CCO) and self-service (SCO) mode – thanks to its smart rotating center unit. Ideal for stores with variable customer flows, a number of staff or limited space. Hybrid makes it easy to adapt the checkout to your daily needs.



► Flexibility built into every detail – for maximum efficiency in minimum space.

Who is it for?

► Target customers

Mainly grocery stores who want to optimize space, staffing and customer flow with a flexible checkout setup.

► Retail environment

Perfect for indoor stores that need to switch between different checkout modes throughout the day – especially in larger supermarkets, convenience stores, and high-traffic areas.

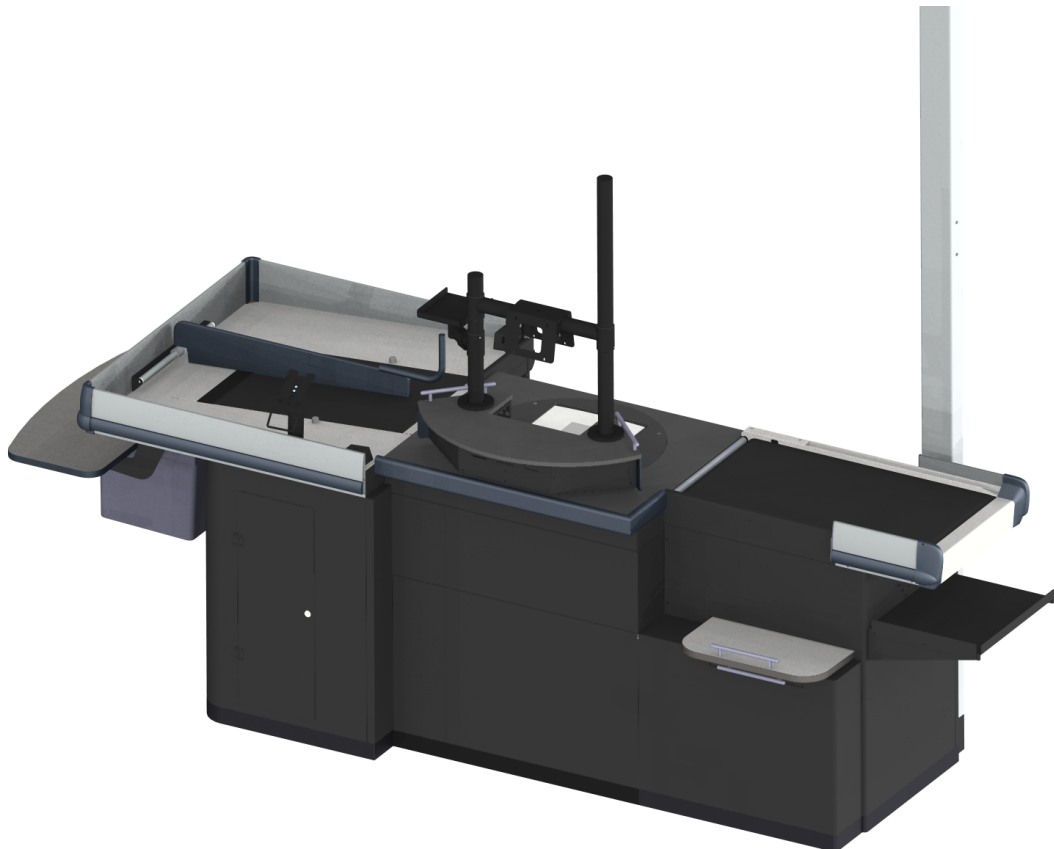
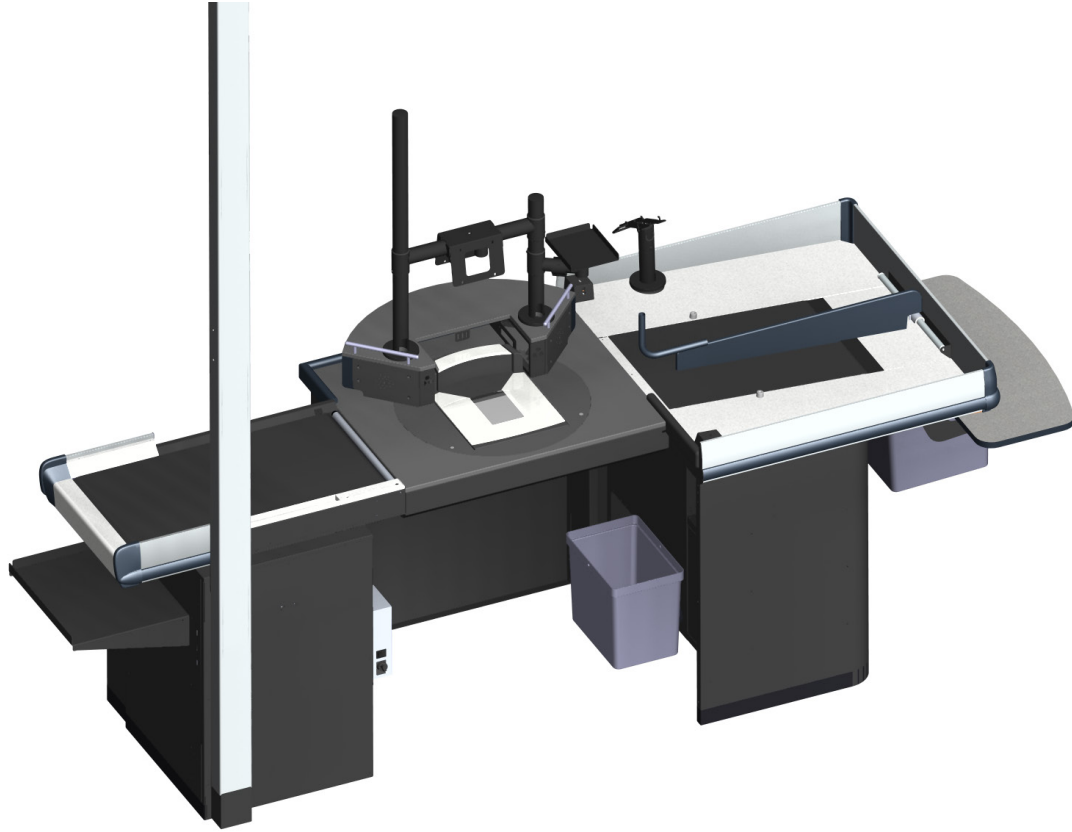
Key features and benefits

- Easy to switch between manned and self-service operation
- Available in different lengths and configurations
- Compact footprint with space-efficient design
- Compatible with most POS and scanner systems
- Both cash and card payment available
- Easy to clean and maintain
- Delivered in main parts for fast installation

Technical specification

| | |
|---------------------------|---|
| Dimensions | Length: 2 820-4 880 mm Width: 1 123 mm Height: 903 mm |
| Packing area alternatives | Dual lane divider, Triple lane with additional divider |
| Weight | 180–350 kg |
| Certifications | FI |
| Voltage | ~230 VAC, 50–60 Hz |
| Operating conditions | Indoor, 5–35°C |
| Payment option | Cash and card payment |
| Scale | Integrated, scanner |
| Scanner | Dimensions prepared for Magellan 9800 |
| Ergonomic norms | Applicable to Swedish recommendations ADI566 |
| Standards | EN ISO 12100, EN 60204-1, EN 61000 |
| Options | Yes |

Hybrid Standard







Scan the QR code to visit our website, where you
can learn more about our offering.



Oy Checkmark Ltd

Hallipussi 5
761 00 Pieksämäki
FINLAND

Contact

Tele: +358 20 123 0700
Mail: checkmark@checkmark.fi
Website: www.checkmark.fi